



HID ignitors for series systems

SI 51 220-240V 50/60Hz

HID ignitors for series systems

Product data

• General Characteristics

Application code	51
Rated Lamptype	HPI
Rated Number of Lamps	1 piece
Rated Ballast-Lamp Power	250/400
Line Voltage	220-240 V
Line Frequency	50/60 Hz
Housing	SNI-85

• Operating Characteristics

Ignition type	Parallel
Number of ignition pulses	1 x
Ignition Voltage	0.75 (max) kV
Response voltage	190 V
Mains voltage safety (AC)	-10%/+10%
Mains voltage performance (AC)	-8%/+6%
Power losses gear	1.0 W

• Wiring Characteristics

Cable-Cap wires device/lamp	150 nF
Connector type	Screw
Striplength	6.0 mm
Wcs Ballast contacts	0.70-2.50 mm2

• Temperature Characteristics

T-case maximum	80 (max) C
----------------	------------

T-ambient	-20 (min), 75 (max) C
T-storage	-25 (min), 80 (max) C

• Product Dimensions

Length A1	84.5 mm
Fixing Hole Distance	65.0 mm
Length A2	
Width B1	41.0 mm
Height C1	38.0 mm
Fixing Hole Diameter D1	4.3 mm

• Approval & Application Chars

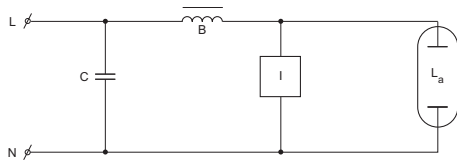
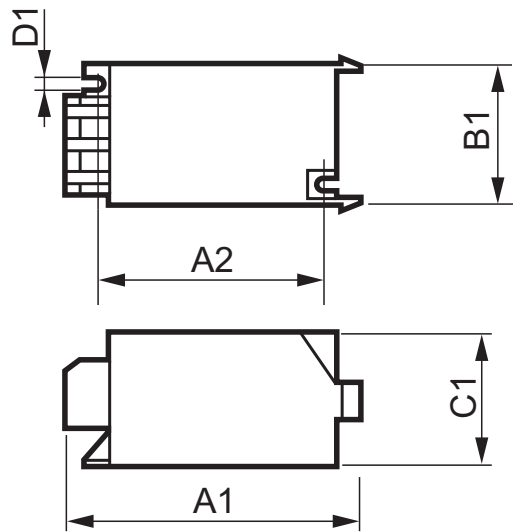
CE marking	Yes
ENEC certificate	Yes

• Product Data

Order code	913619519966
Full product code	913619519966
Full product name	SI 51 220-240V 50/60Hz
Order product name	SI 51 220-240V 50/60Hz
Pieces per pack	1
Packing configuration	48
Packs per outerbox	48
Bar code on pack - EAN1	8711500915535
Bar code on outerbox - EAN3	8711500908353
Logistic code(s) - 12NC	913619519966
Net weight per piece	0.047 kg

PHILIPS

Dimensional drawing



SI 51 220-240V 50/60Hz

Product	A1 (Norm)	A2 (Norm)	B1 (Norm)	C1 (Norm)	D1 (Norm)
SI 51 220-240V 50/60Hz	84.5	65.0	41.0	38.0	4.3



© 2014 Koninklijke Philips N.V. (Royal Philips)
All rights reserved.

Specifications are subject to change without notice. Trademarks are the property of Koninklijke Philips N.V. (Royal Philips) or their respective owners.

www.philips.com/lighting

2014, April 11
data subject to change